


# Diagnosis report of 2017 VOLVO V90 Inscription



## Car details

|                             |   |
|-----------------------------|---|
| Color: Grey                 | CO <sub>2</sub> NEDC Emission: 129 g/km |
| Fuel type: Diesel           | CO <sub>2</sub> WLTP Emission: 169 g/km |
| Body type: Wagon            |   |
| Number of doors: 5          | Engine size: 2.00 l                     |
| Number of seats: 5          | Cylinders: 4                            |
| Mileage: 170 089 km         | Power: 173 kw                           |
| VIN Code: YV1PW68BCH1003360 | Fuel consumption: 4.90 l/100km          |
| Gearbox: Automatic          | Tire size: 255/35 - 20"                 |
| Drive type: All-Wheel Drive | Longo Stock ID: G839933                 |

 Longo Certified

## Car photos



### Disclaimer

This report has been generated automatically using the information available in our systems and may not be fully comprehensive or complete. Automated translation technology was used in its preparation, and as a result, minor inaccuracies may occur. If you have any questions or if any part of the report is unclear, please do not hesitate to contact our sales team. They will be happy to assist you.

# Diagnosis report of 2017 VOLVO V90 Inscription



## Diagnosis details

Mileage on completion date: 170 089 km

Checked by Longo Shared Service certified diagnostics team: Eimantas A., Arnas S., Mindaugas Š.

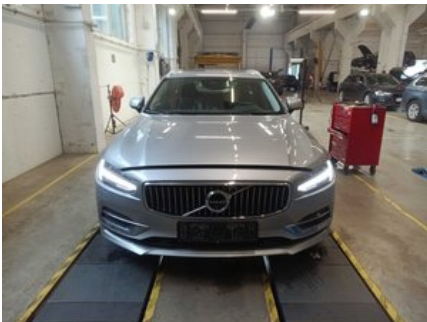
This vehicle has been inspected in accordance with the Longo 150-point checklist, covering the body exterior, interior, and mechanical condition. Based on the inspection performed and the information available at the time of assessment, no indications of involvement in major accidents were identified. Information regarding maintenance history and mandatory roadworthiness inspections is based on available documentation and records from the country of export. Please note that certain general wear and tear issues are considered acceptable and may not be repaired.

## Summary of diagnosed issues

During the comprehensive diagnosis conducted by Longo, 15 issues were identified in the vehicle.

| Interior              | Exterior              | Mechanical            |
|-----------------------|-----------------------|-----------------------|
| ✔ 1 issues identified | ✔ 6 issues identified | ✔ 8 issues identified |

## Diagnosis process



## Interior

- ✔ 1. Inside: Trims - Condition



## Exterior

---

- ✔ **1. Lights:** Front Lights (City, Regular, Full Headlight, Fog, Indicator) - Basic Functioning, Damage, and Color



- ✔ **2. Front:** Front Bumper - Condition and Alignment



- ✔ **3. Front:** Front Bumper - Condition and Alignment



✔ **4. Front:** Windscreen Integrity - Free from MOT-Excluding Damage



✔ **5. Side:** Wheels - Condition



✔ **6. Other:** Roof - Visual Damage (e.g., Hail Damage)



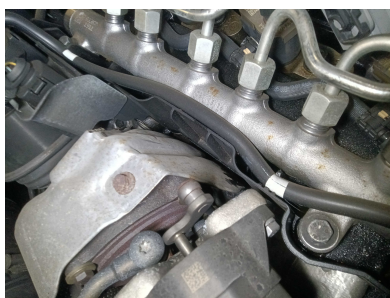
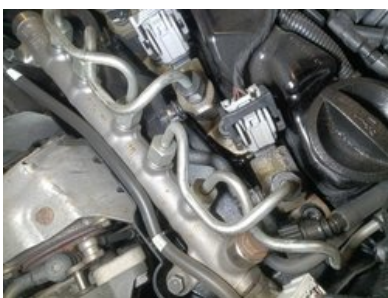
## Mechanical

---

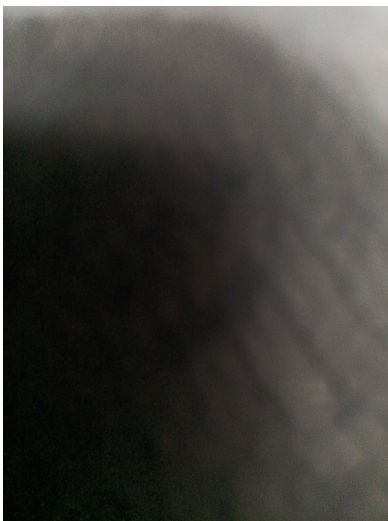
- ✓ **1. ENGINE:** Mounting - Front (of Engine Bay)



- 
- ✓ **2. ENGINE:** Valve Cover Gasket



- 
- ✓ **3. OTHER:** Engine Oil & Filter Change



✔ **4. OTHER:** Change Tires

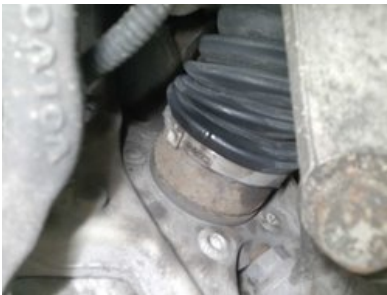


✔ **5. SUSPENSION:** Ball Joint Lower Both Sides

✔ **6. SUSPENSION:** Suspension Lower Arm Both



✔ **7. FINAL DRIVE, SHAFT & AXLES:** Driveshaft - Left



✔ **8. ENGINE MANAGEMENT - FUEL:** Turbocharger (Low Pressure)

## Other

---

### ✓ 1. Brake Test Line Results



### ✓ 2. Diagnostic Photo



### ✓ 3. Air-Conditioning Measurement



### ✓ 4. Add Photo of Front Interior



# Preparation and repair report of 2017 VOLVO V90 Inscription



## Summary of work performed in Longo Preparation center

---

During the preparation process, the following works were performed

### Mechanical repairs

- ✓ 1. Driveshaft - Left
- ✓ 2. Valve Cover Gasket
- ✓ 3. Engine Oil & Filter Change
- ✓ 4. Ball Joint - Lower (Both)

### Cleaning & polishing

- ✓ 1. Body wet wash
- ✓ 2. Full interior deep clean using only hypoallergenic cleaning products
- ✓ 3. Post cleaning body polish

### Spare parts used during preparation

- 1. Oil Filter (OE662/4)
- 2. Engine Head Cover Gasket (71-12279-00)
- 3. Seal Kit, Injector Nozzle (DRM0189)
- 4. Drive Shaft Protection Kit (VKJP01001)
- 5. Quartz Ineo Xtra EC6 0W20 208L 5.2L
- 6. Ball Joint (TC4877)
- 7. Oil Pan Gasket (EL247804)

---

#### Disclaimer

This report has been generated automatically using the information available in our systems and may not be fully comprehensive or complete. Automated translation technology was used in its preparation, and as a result, minor inaccuracies may occur. If you have any questions or if any part of the report is unclear, please do not hesitate to contact our sales team. They will be happy to assist you.

# Additional information about 2017 VOLVO V90 Inscription



## Additional pictures























# Longo 150-point checklist

Every vehicle is carefully examined according to Longo's comprehensive 150-point checklist, ensuring a thorough assessment mechanical condition. Depending on the factors such as condition, mileage, and specifications, additional checks may be included or omitted.



## Vehicle Identity & History

|  |                                   |  |
|--|-----------------------------------|--|
| Vehicle identification number (VIN) verified | Registration number confirmed     | Mileage verified                         |
| Year of manufacture confirmed                | First registration date confirmed | Service history checked                  |
| Last service date and mileage recorded       | Next service due date recorded    | Previous accident damage check performed |
| Manufacturer recall status checked           | Vehicle documents verified        | Number of keys checked                   |

## Exterior Condition

|                               |                                  |                                  |
|-------------------------------|----------------------------------|----------------------------------|
| Front bumper inspected        | Rear bumper inspected            | Bonnet/hood inspected            |
| Roof inspected                | Left side panels inspected       | Right side panels inspected      |
| All doors inspected           | Boot/trunk inspected             | Fuel filler cover inspected      |
| Tow bar (if fitted) inspected | Number plate condition confirmed | Paintwork overall checked        |
| Rust or corrosion checked     | Gaps between panels checked      | Windscreen inspected             |
| Rear window inspected         | Side windows inspected           | Sunroof/panoramic roof inspected |

## Interior Condition

|                                   |   |                                  |
|-----------------------------------|---|----------------------------------|
| Driver's seat condition checked   | Passenger seats checked                 | Rear seats checked               |
| Seat adjustment mechanisms tested | Seat heating/cooling tested (if fitted) | Seatbelts checked                |
| Carpets inspected                 | Floor mats inspected                    | Headlining inspected             |
| Interior trims inspected          | Dashboard inspected                     | Door trims inspected             |
| Armrest inspected                 | Parcel shelf inspected                  | Luggage area condition checked   |
| Luggage area carpets checked      | Luggage area lighting tested            | Spare wheel / repair kit checked |

## Lights, Mirrors & Glass

|  |                           |                                  |
|--|---------------------------|----------------------------------|
| Front headlights tested                | High beam tested          | Fog lights tested                |
| Daytime running lights tested          | Rear lights tested        | Brake lights tested              |
| Reverse lights tested                  | Indicators tested         | Number plate lights tested       |
| Side markers/reflex reflectors checked | Interior lights tested    | Dashboard warning lights checked |
| Sun visors inspected                   | Interior mirror inspected | Exterior mirrors inspected       |
| Electric mirror adjustment tested      |                           |                                  |

## Comfort & Electronics

|                                    |   |                               |
|------------------------------------|---|-------------------------------|
| Air conditioning tested            | Heating system tested   | Ventilation system tested     |
| Window heating tested (front/rear) | Power windows tested  | Central locking tested        |
| Remote key tested                  | Child lock tested   | Infotainment screen tested    |
| Radio tested                       | Navigation tested (if fitted)                                 | Bluetooth connection tested   |
| USB/12V sockets tested             | Parking sensors tested  | Rear view camera tested       |
| Parking assistance systems tested  | Cruise control tested   | Steering wheel buttons tested |
| Horn tested                        | Electronic driver aids checked (lane assist, etc., if fitted) |                               |

## Safety Equipment

|                              |  |   |
|------------------------------|--|---|
| Airbags checked via system   | Passenger airbag switch checked        | ABS warning light checked                             |
| ESC/traction control checked | Tyre pressure monitoring system tested | Fire extinguisher/first aid kit present (if supplied) |

## Engine Bay & Fluids

|                                |                                    |                                      |
|--------------------------------|------------------------------------|--------------------------------------|
| Engine starts normally         | Engine idles smoothly              | Unusual engine noises checked        |
| Engine mounts checked          | Drive belts checked                | Timing belt/chain condition checked  |
| Battery condition tested       | Battery charging tested            | Alternator performance tested        |
| Fluid leaks checked            | Engine oil level checked           | Engine oil quality checked           |
| Coolant level checked          | Coolant quality checked            | Brake fluid level checked            |
| Brake fluid quality tested     | Power steering fluid level checked | Power steering fluid quality checked |
| Windscreen washer fluid filled | Fuel system checked for leaks      |                                      |

## Braking System

|                             |                          |                      |
|-----------------------------|--------------------------|----------------------|
| Front brake discs checked   | Rear brake discs checked | Brake pads checked   |
| Brake hoses checked         | Brake lines checked      | Parking brake tested |
| Brake pedal response tested | ABS function confirmed   |                      |

## Steering & Suspension

|                                  |                            |                                      |
|----------------------------------|----------------------------|--------------------------------------|
| Steering wheel alignment checked | Steering response tested   | No excessive steering play confirmed |
| Power steering assistance tested | Front suspension inspected | Rear suspension inspected            |
| Shock absorbers inspected        | Springs inspected          | Ball joints inspected                |
| Wheel bearings checked           |                            |                                      |

## Wheels & Tyres

|   |                                 |                              |
|---|---------------------------------|------------------------------|
| Front tyres tread depth measured            | Rear tyres tread depth measured | Tyre wear pattern checked    |
| Tyre sidewalls inspected                    | Tyre pressures checked          | Spare tyre condition checked |
| Alloy wheels checked for damage             | Wheel nuts/bolts secure         | Locking wheel nut present    |
| Additional tyre set inspected (if included) |                                 |                              |

## Exhaust & Fuel System

|   |                             |                             |
|---|-----------------------------|-----------------------------|
| Exhaust condition checked                     | Exhaust leaks checked       | Catalytic converter present |
| Diesel particulate filter present (if fitted) | Fuel tank condition checked | Fuel lines inspected        |
| Fuel filler cap tested                        |                             |                             |

## Road Test & Driving Performance

|                               |                                |                         |
|-------------------------------|--------------------------------|-------------------------|
| Smooth acceleration confirmed | Smooth gear shifting confirmed | Clutch operation tested |
| Braking performance tested    | Driving stability confirmed    |                         |